

Thaumasia Region: Multiples Points Of View

An approach to “much ado about nothing”

Federico M. Podestá ; Mauro G. Spagnuolo

Advisor: Angelo P. Rossi

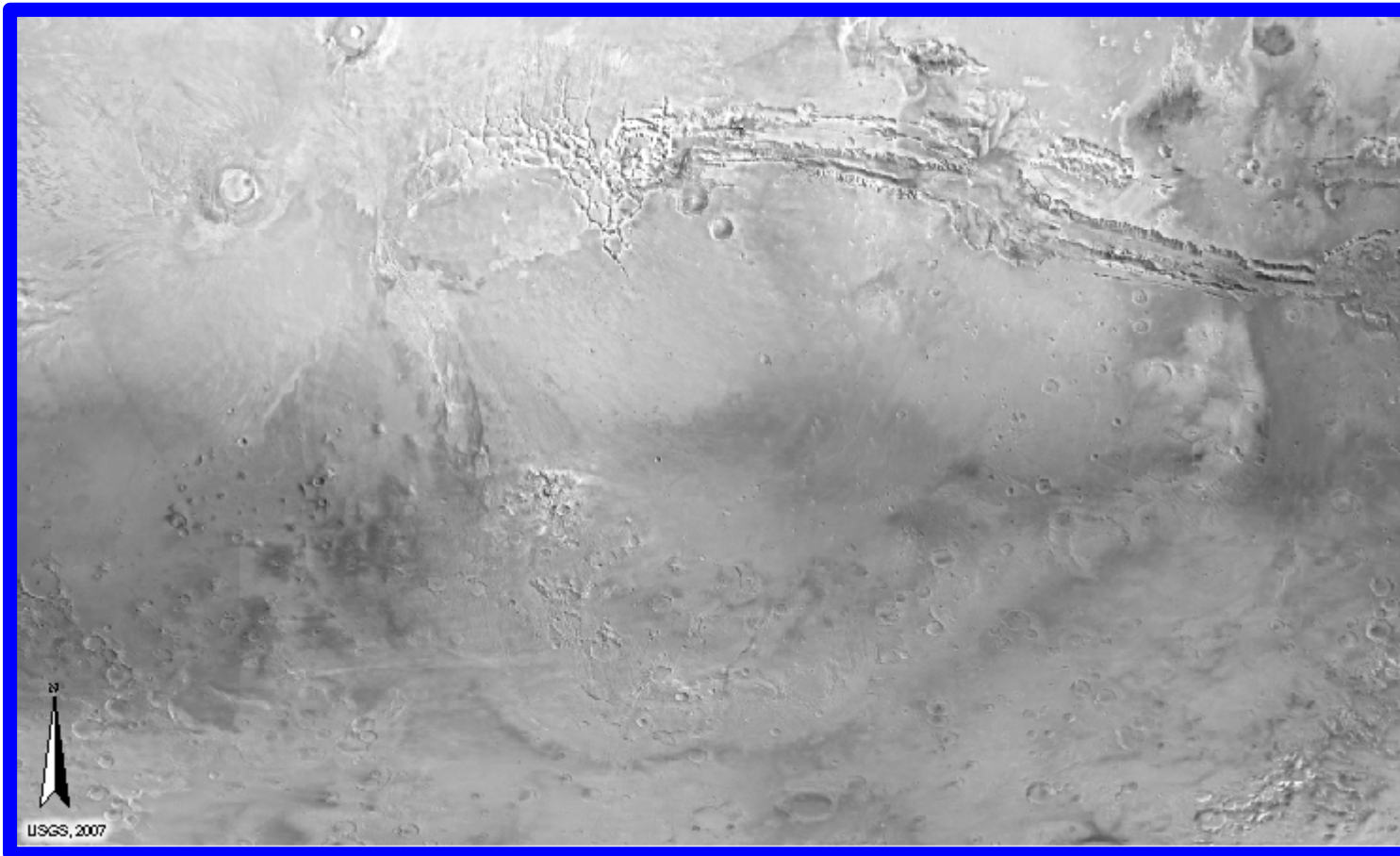


Objective: Analysis of crater deformation in Thaumasia
Region in order to calculate extension values

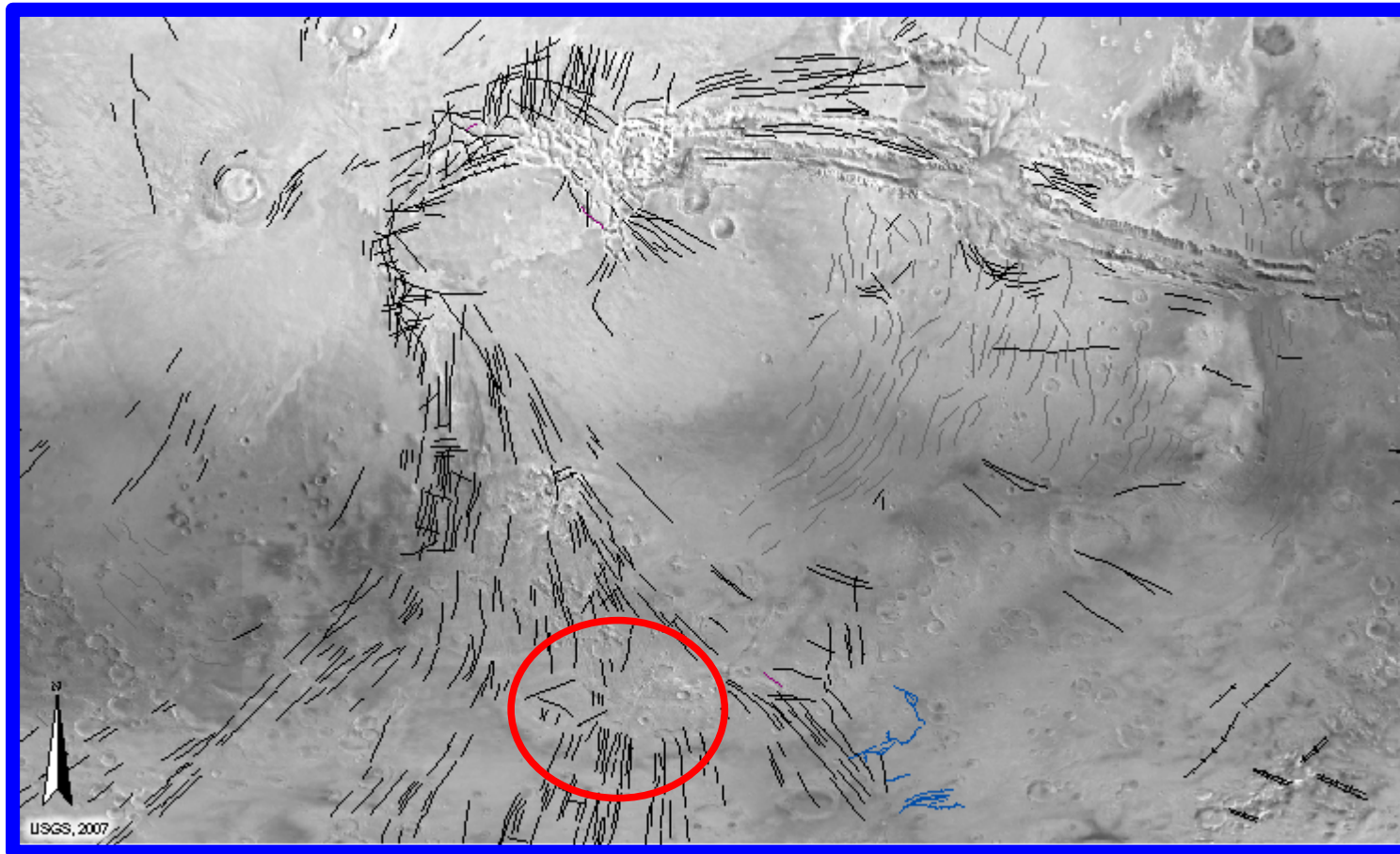
Method: Analyzing multiple Data sets

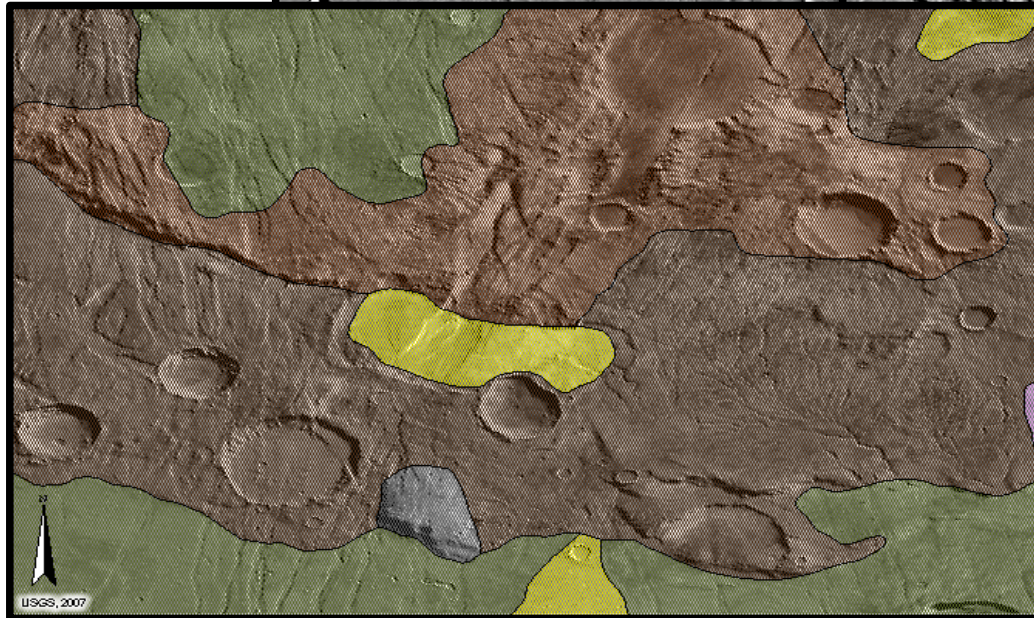
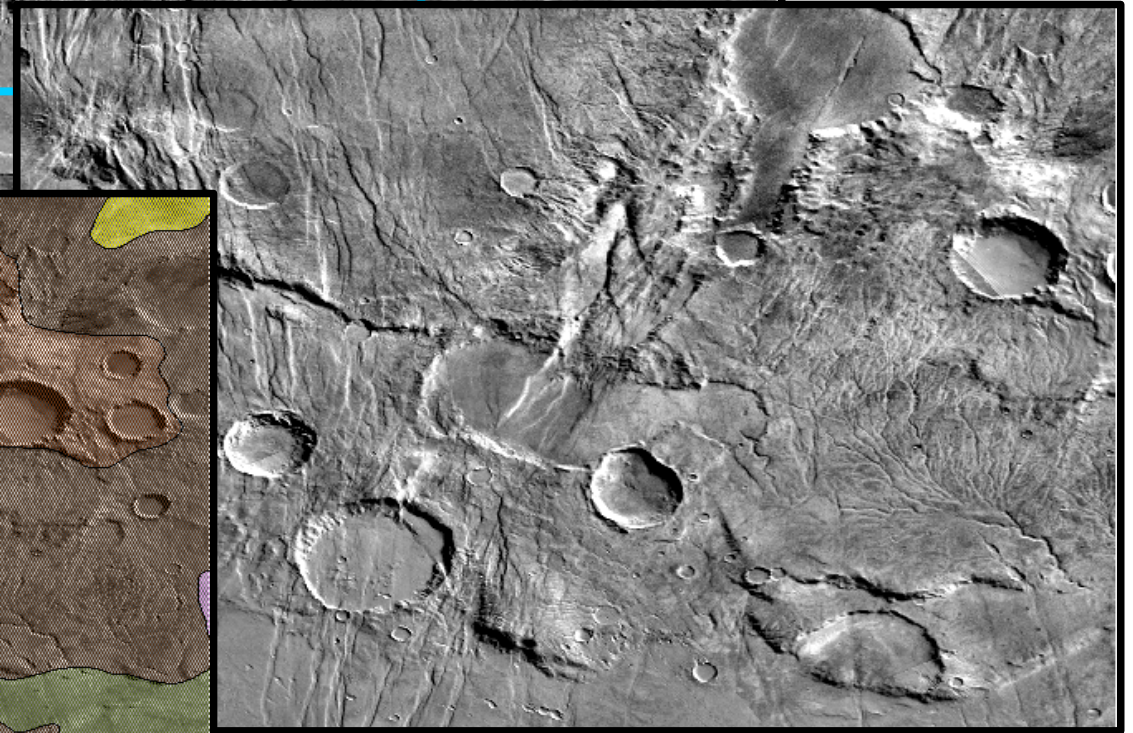
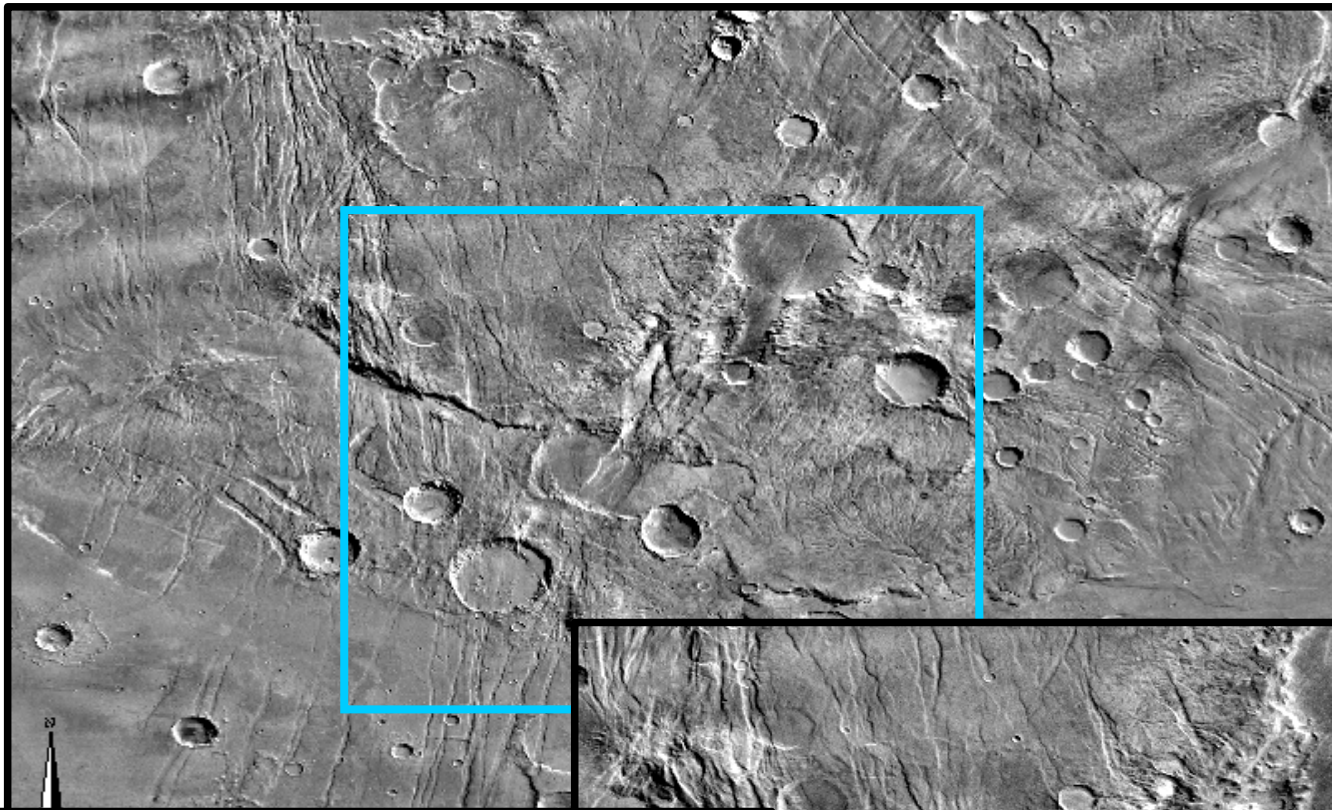
Tools & DATABASE: MINIVICAR, ISIS, IDL, SPICE
MOLA, HRSC, MDIM 2.1.

Geological Background:



Geological Background:





Aplicaciones Lugares Escritorio 12:13

HRSCview data explorer - Iceweasel

Archivo Editar Ver Historial Marcadores Herramientas Ayuda

http://hrscview.fu-berlin.de/cgi-bin/ion-p?ION_E1=UPDATE%3Aion%3A%2F%2F

Getting Started Latest Headlines

Índice de ftp://psa.esac.esa.i... HRSCview data explorer

Download 0508_0000

Latitude, °N Longitude, °E
-44.664 262.381

Footprint map

All images
Archive DTMs

Footprint scale, km/pix: 5

Image mode

Nadir DTM
Elevation Contours

Colour:

Mars-like Raw
Stretched Enhanced
Ratio Substitute IR

Image scale, m/pix: 200

Perspective view

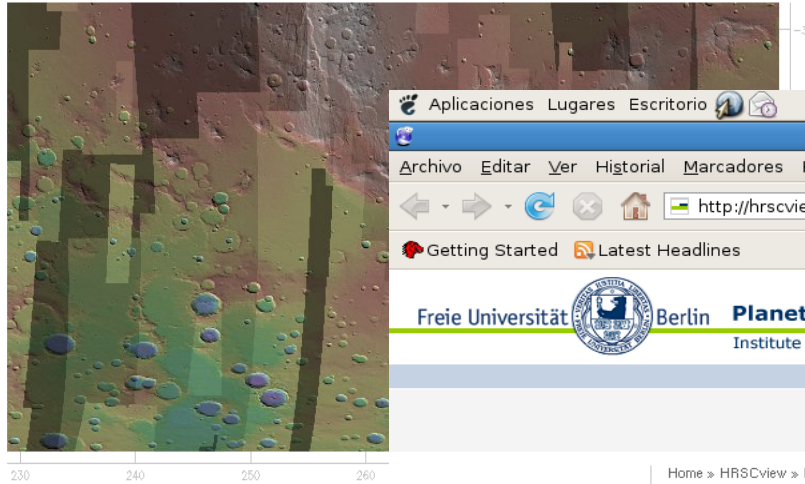
Direction Exaggeration
North 1.5

View size 720x360

Update view

Home » HRSCview

HRSCview data explorer



Aplicaciones Lugares Escritorio 12:46

HRSC image - Iceweasel

Archivo Editar Ver Historial Marcadores Herramientas Ayuda

http://hrscview.fu-berlin.de/cgi-bin/ion-p?page=product.ion&code=0826249256

Getting Started Latest Headlines

Freie Universität Berlin Planetology and Remote Sensing
Institute of Geosciences

Deutsches Zentrum für Luft- und Raumfahrt e.V. DLR

Home | Contact | Impressum

Home » HRSCview » HRSC science data product

HRSC image 0508_0000

[View image footprint](#)

Product description

Please see the [data usage policy](#) for how to reference the data in publications.

Channel	Resolution, m/pix	Dimensions, pix	Download (level 2)	Download (level 3)	Download (level 4)
Nadir (panchromatic)	25.0	7704x37792	H0508_0000_ND2.IMG	H0508_0000_ND3.IMG	h0508_0000.nd4.50.bz2
Infra-red	100.0	1926x9448	H0508_0000_IR2.IMG	H0508_0000_IR3.IMG	h0508_0000.ir4.50.bz2
Red	100.0	1926x9448	H0508_0000_RE2.IMG	H0508_0000_RE3.IMG	h0508_0000.re4.50.bz2
Green	100.0	1926x9448	H0508_0000_GR2.IMG	H0508_0000_GR3.IMG	h0508_0000.gr4.50.bz2
Blue	100.0	1926x9448	H0508_0000_BL2.IMG	H0508_0000_BL3.IMG	h0508_0000.bl4.50.bz2
Photometry 1				H0508_0000_P12.IMG	
Photometry 2				H0508_0000_P22.IMG	
Stereo 1				H0508_0000_S12.IMG	
Stereo 2				H0508_0000_S22.IMG	
Elevation	75.0	2566x12597			h0508_0000.dt4.50.bz2

ORBIT_NUMBER 508
MISSION PHASE NAME 'MR Phase 1'

Encontrar: 0497

Siguiente Anterior Resaltar todo

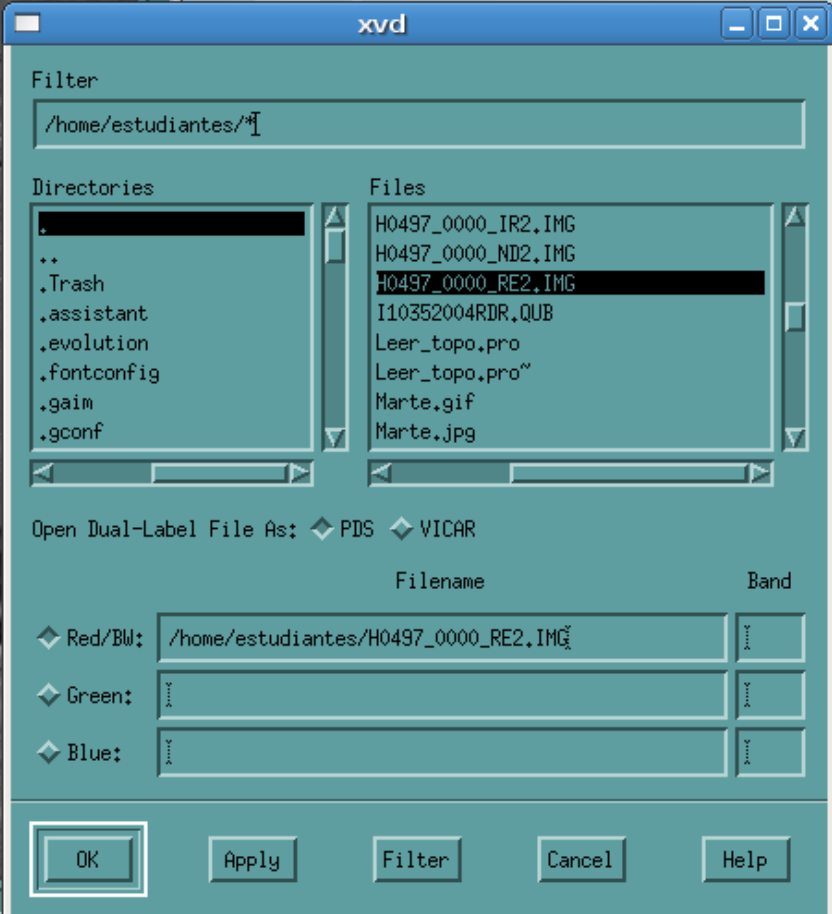
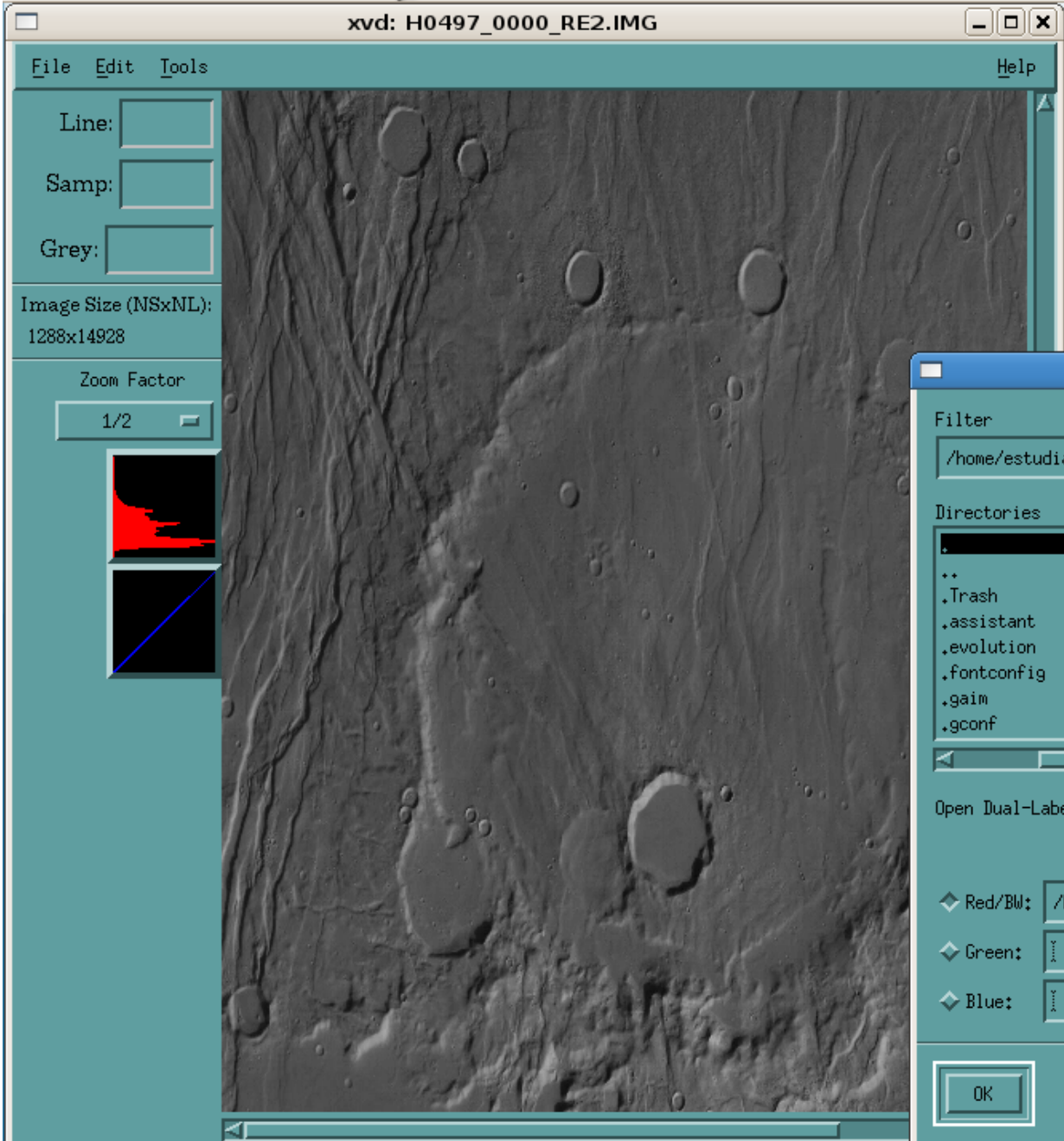
Terminado

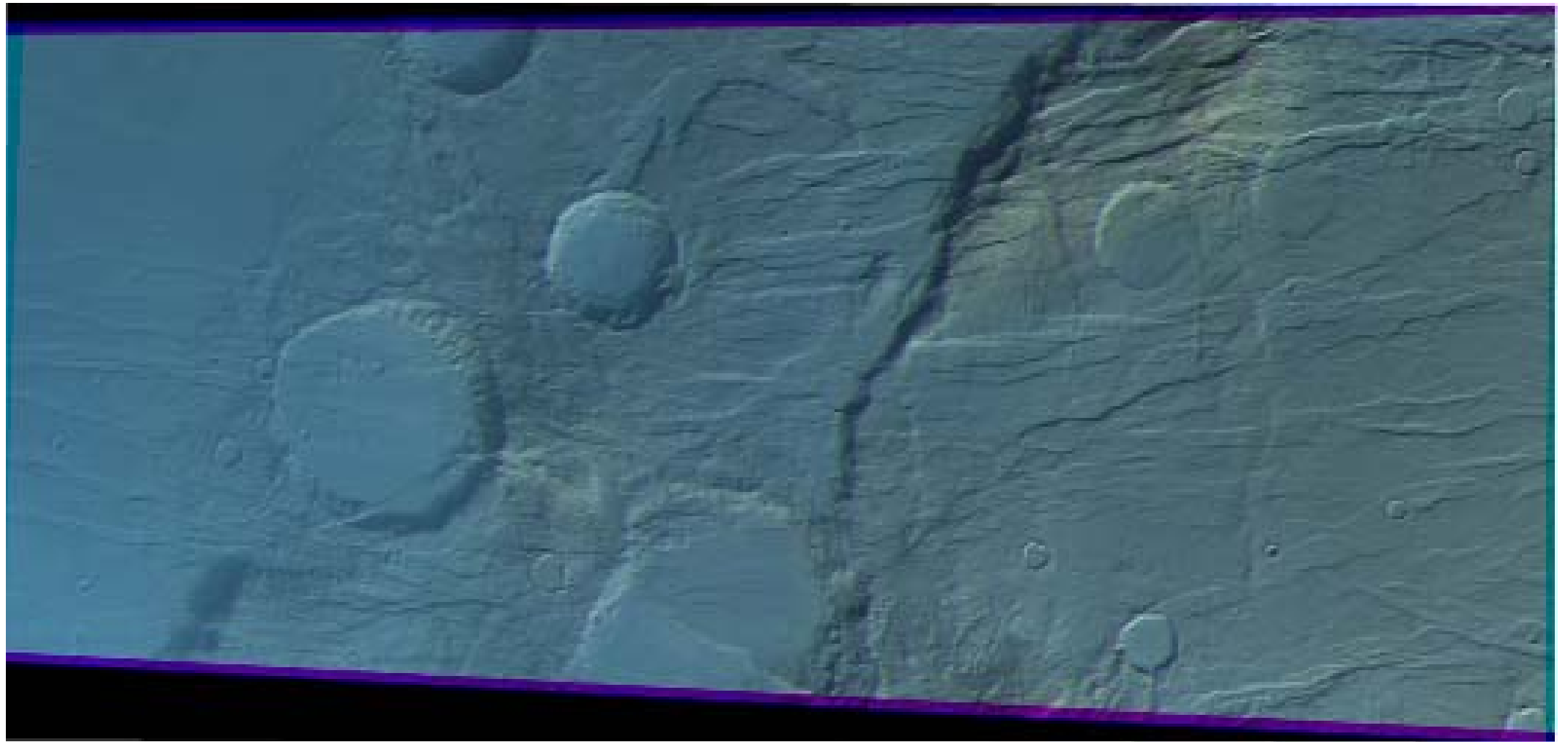
[Regolito - Wikipedia, la en... HRSCview data explorer - I... estudiant

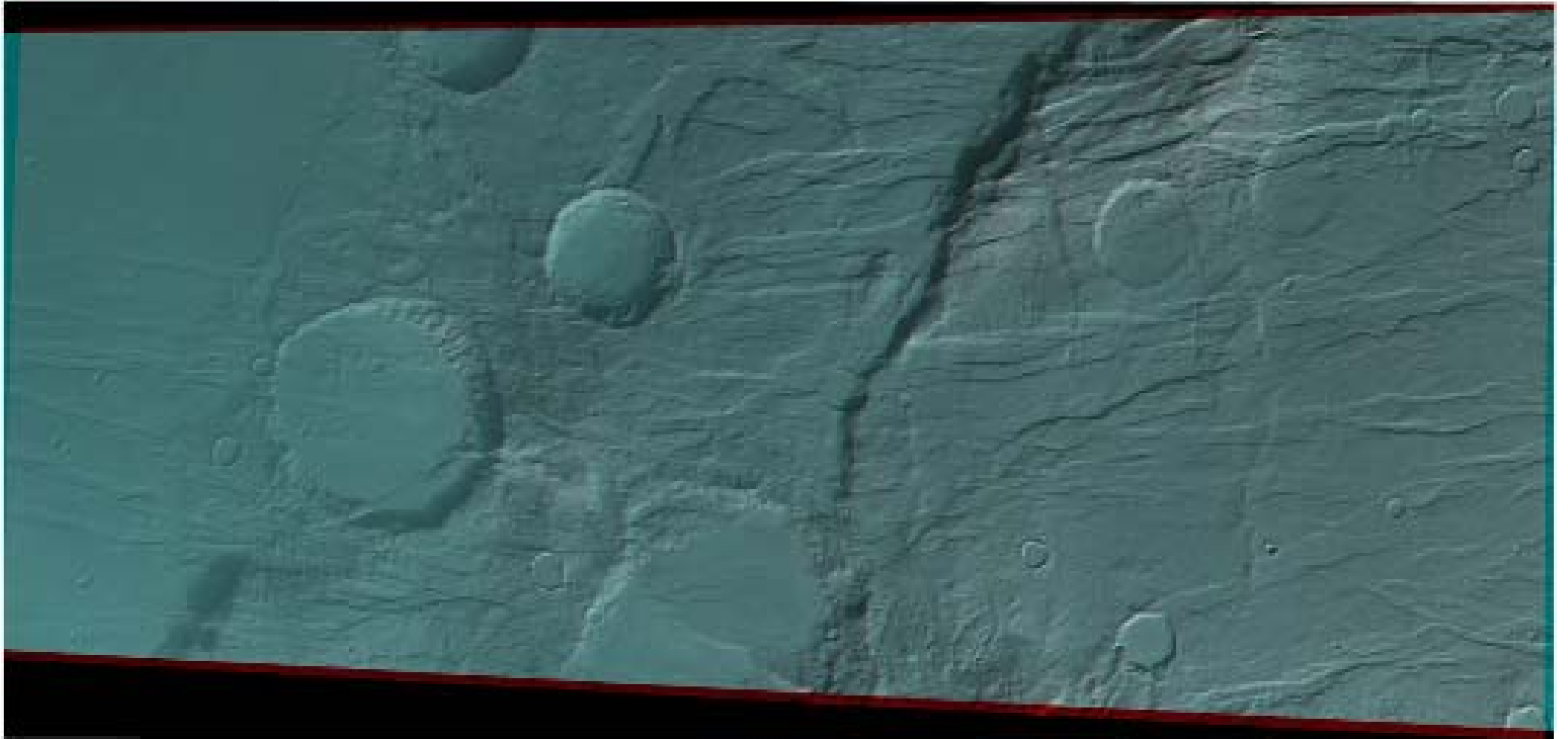
- How to use HRSCview
- Frequently asked questions
- Data usage policy
- Mars Express and HRSC
- FUB Planetology and Remote Sensing
- DLR Institute for Planetary Research
- ESA Planetary Science Archive

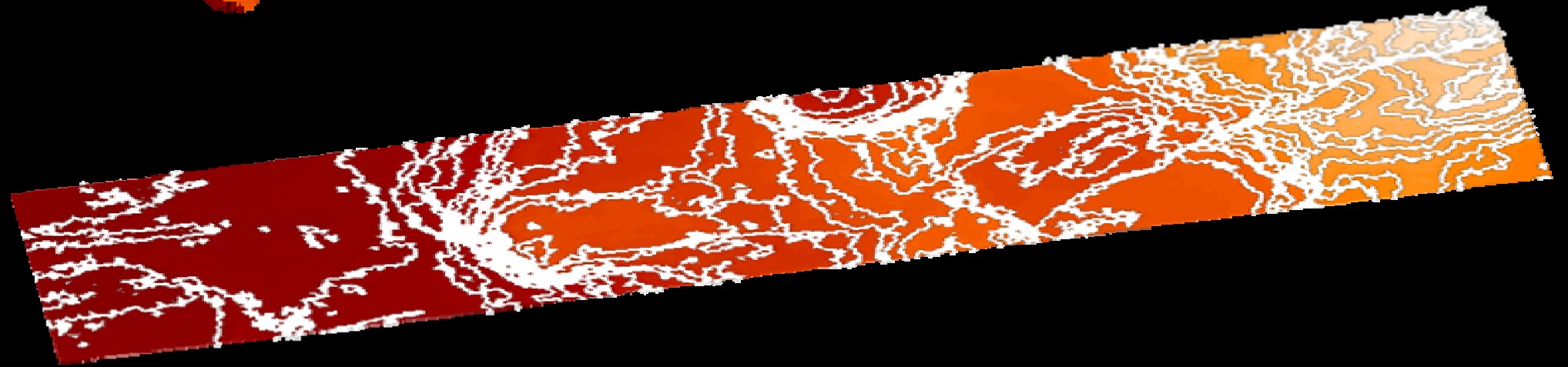
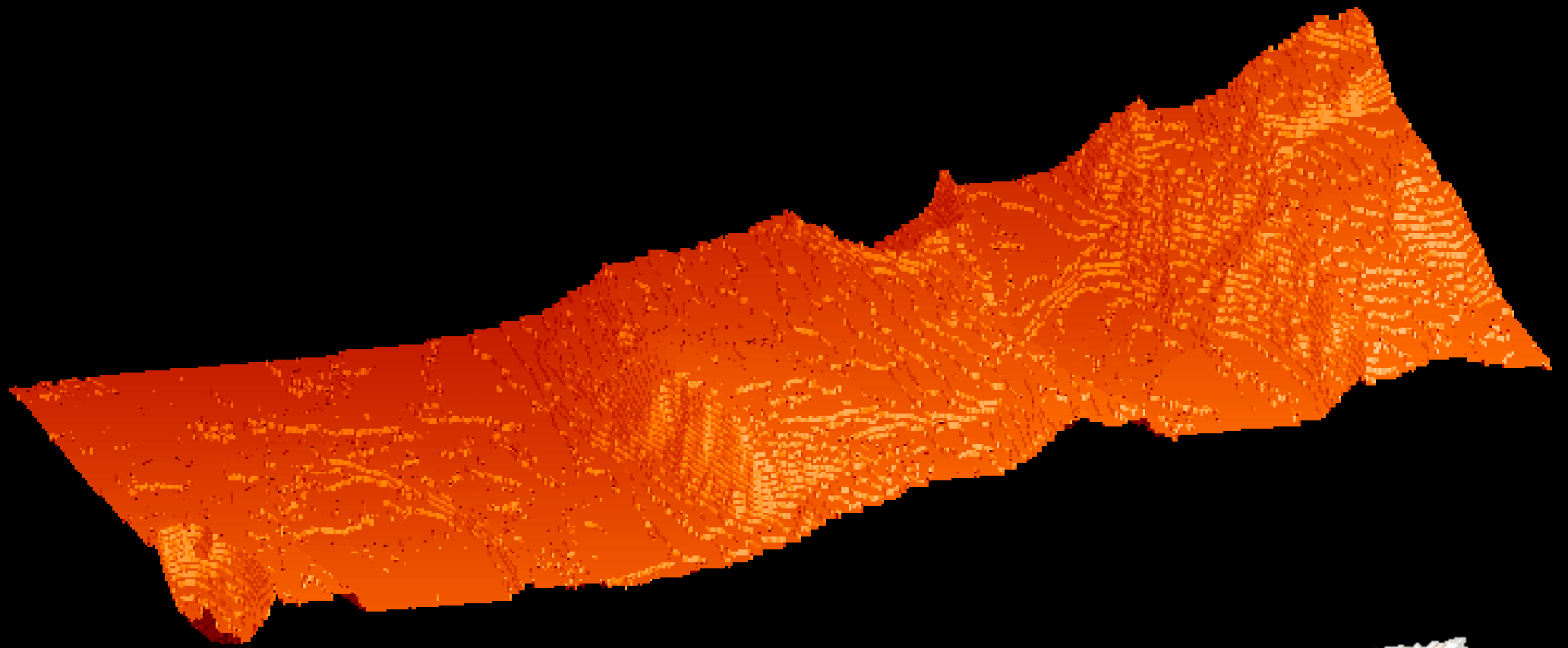
Terminado

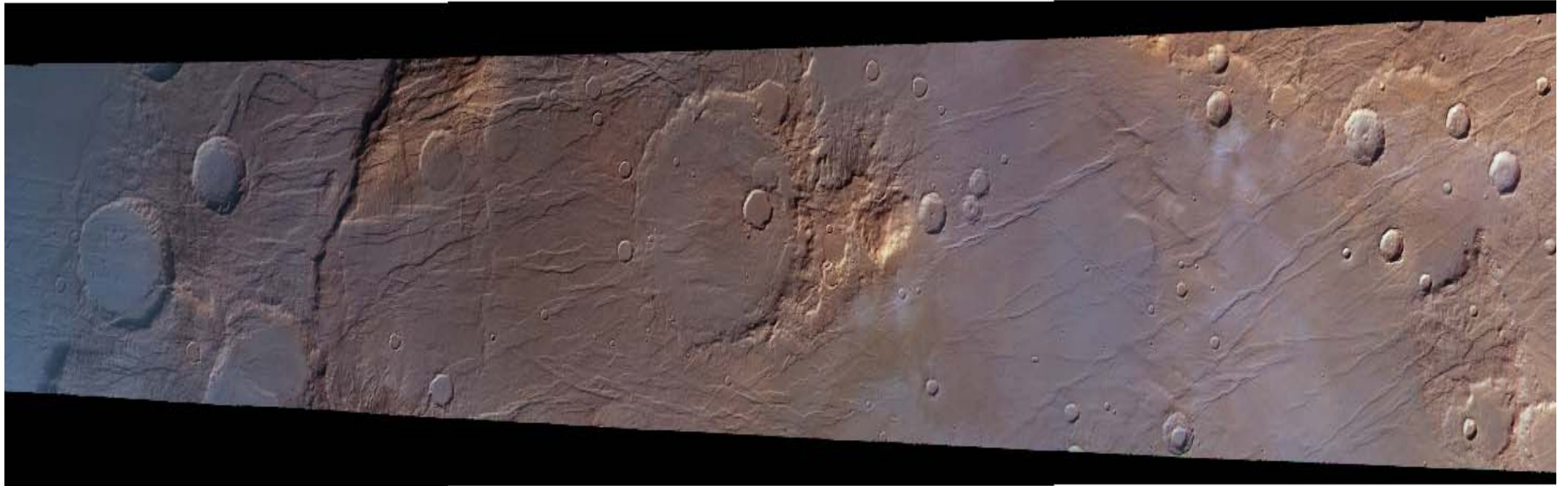
File Manag... HRSCview d... presentació... 12_1600_rg... estudiantes... qview HRSC imag...

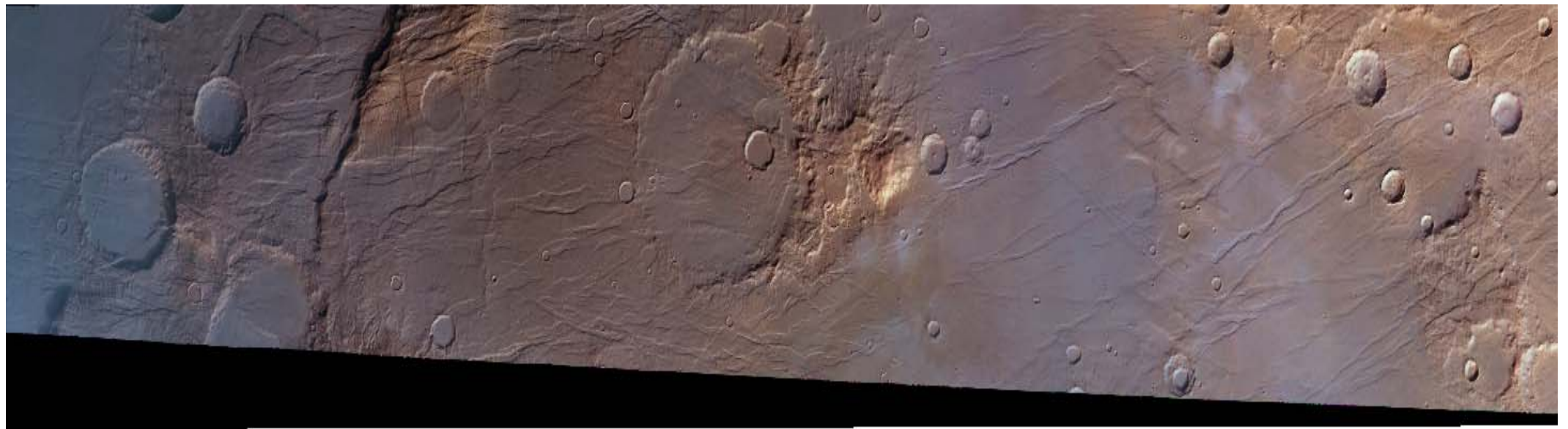


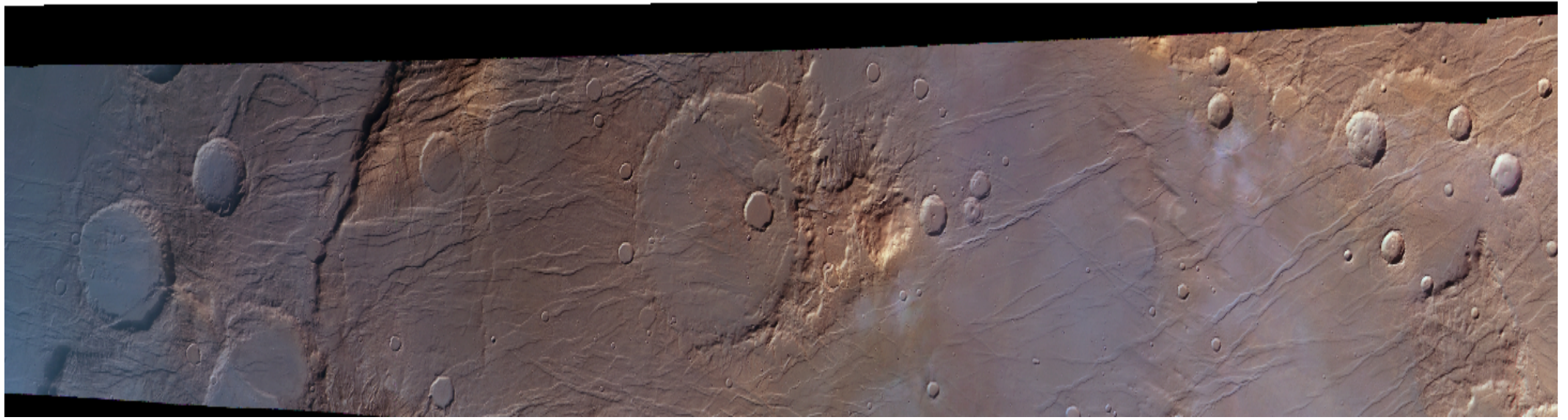


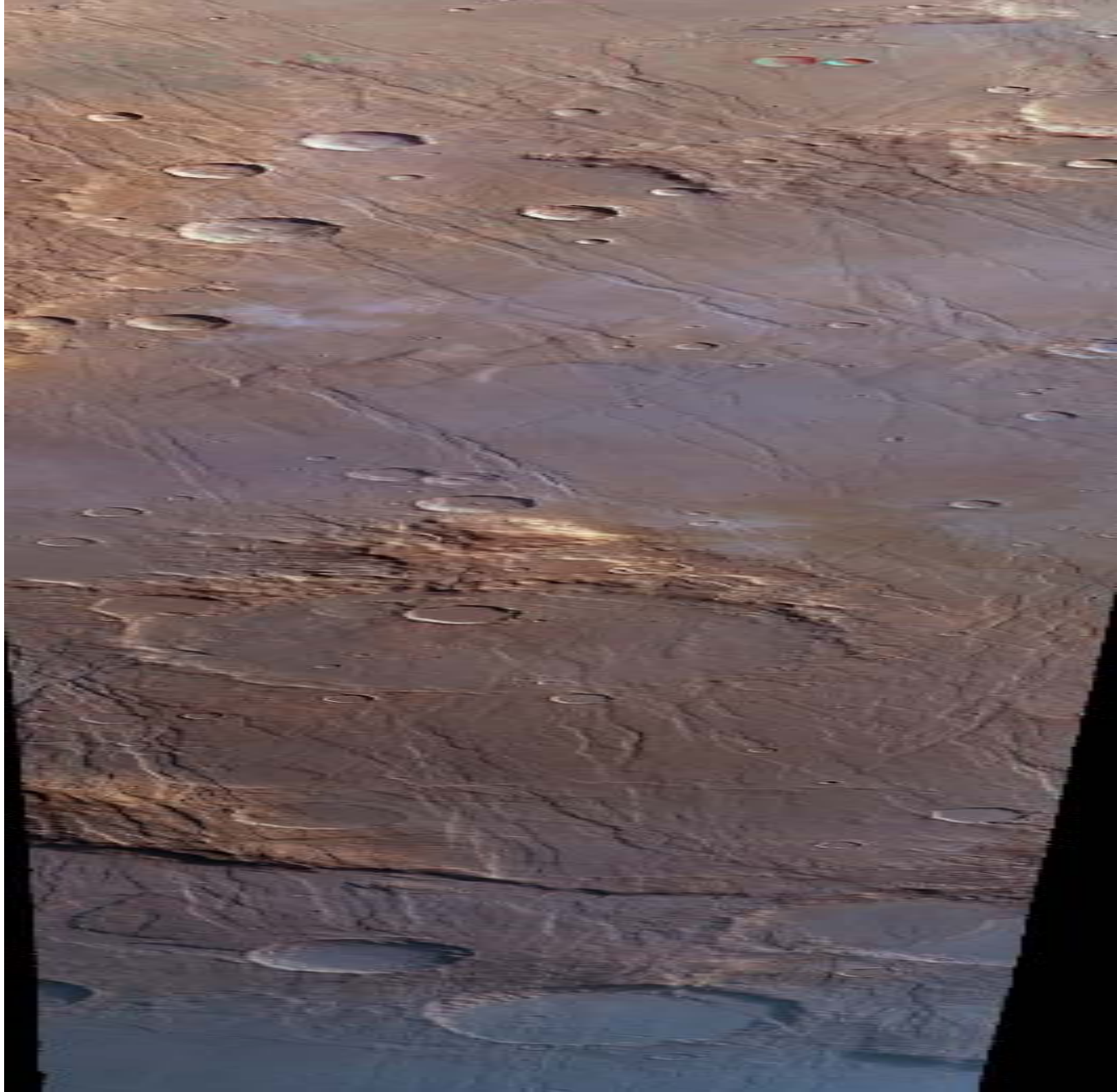












Aplicaciones Lugares Escritorio 12:47


THEMIS Image Data Page for I00816001 - Iceweasel

Archivo Editar Ver Historial Marcadores Herramientas Ayuda

http://themis-data.asu.edu/img/I00816001

Getting Started Latest Headlines

THEMIS Data Releases




HOME | FAQ | DOC | MAP

Image I00816001

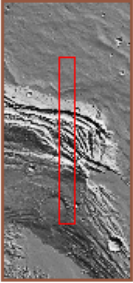
Basic

Advanced

Thumbnail



Context



Credits

Products

Data is available in the following formats:

- Brightness Temperature Image (BTR):
I00816001BTR.IMG
- Calibrated Radiance Cube (RDR):
I00816001RDR.QUB
- Raw Radiance Cube (EDR):
I00816001EDR.QUB

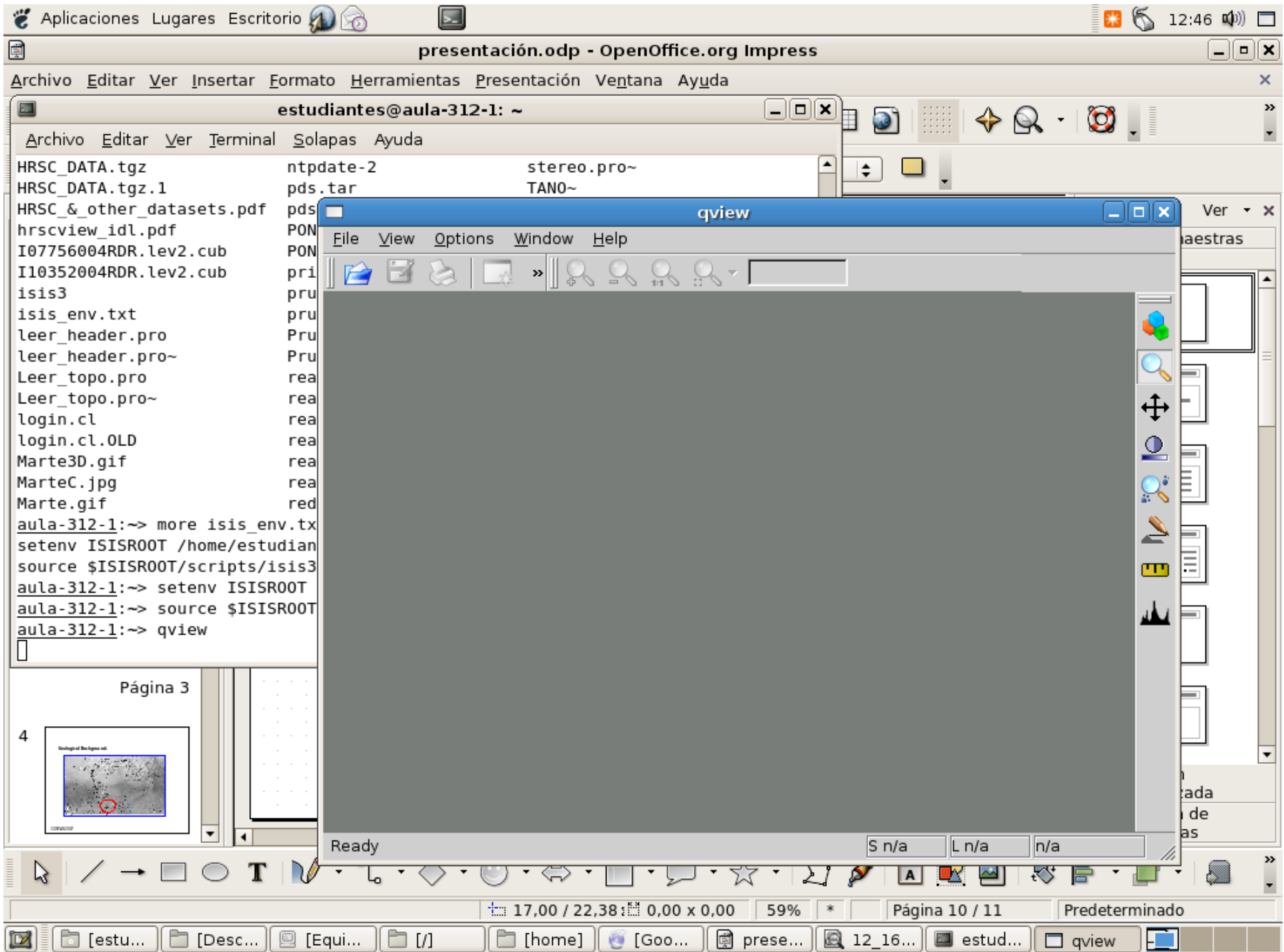
See this image on the [Interactive Map](#).
[THEMIS data usage policy](#)

Geometry

Parameter	Value
Image ID	I00816001
Start Time	2002-02-19 18:59:36.623
Duration	119 s
Image Size	3600x320x10
Summing	1
Bands	1, 2, 3, 4, 5, 6, 7, 8, 9, 10
Orbit	816
Center Latitude	37.169 N
Center Longitude	228.535 E
Solar Longitude	329.633
Sample Resolution	0.105 km

Terminado

File Manag... HRSCview d... presentació... 12_1600_rg... estudiantes... qview THEMIS Ima...



```
Archivo Editar Ver Historial Marc
estu
Archivo Editar Ver Terminal Sol
HRSC_DATA.tgz.1 pds
HRSC_&_other_datasets.pdf pds
hrscview_idl.pdf PON
I07756004RDR.lev2.cub PON
I10352004RDR.lev2.cub pri
isis3 pru
isis_env.txt pru
leer_header.pro Pru
leer_header.pro~ Pru
Leer_topo.pro rea
Leer_topo.pro~ rea
login.cl rea
login.cl.OLD rea
Marte3D.gif rea
MarteC.jpg rea
Marte.gif red
aula-312-1:~> more isis_env.tx
setenv ISISROOT /home/estudian
source $ISISROOT/scripts/isis3
aula-312-1:~> setenv ISISROOT
aula-312-1:~> source $ISISROOT
aula-312-1:~> qview
thmprocaula-312-1:~> thmproc
```

Colour:

Mars-like Raw

Stretched Enhanced

Ratio Substitute IR

Image scale, m/pix

Perspective view

Direction Exaggeration

View size

thmproc

File Options View Help

Files

FROM

TO

BANDS

REMOVE Remove Intermediate Files

Level Processing

Ingestion Import and initialize a Themis RDR file.

Mapping Process the input file through the map projection phase.

Ingestion Parameters

PCK

0% Ready

